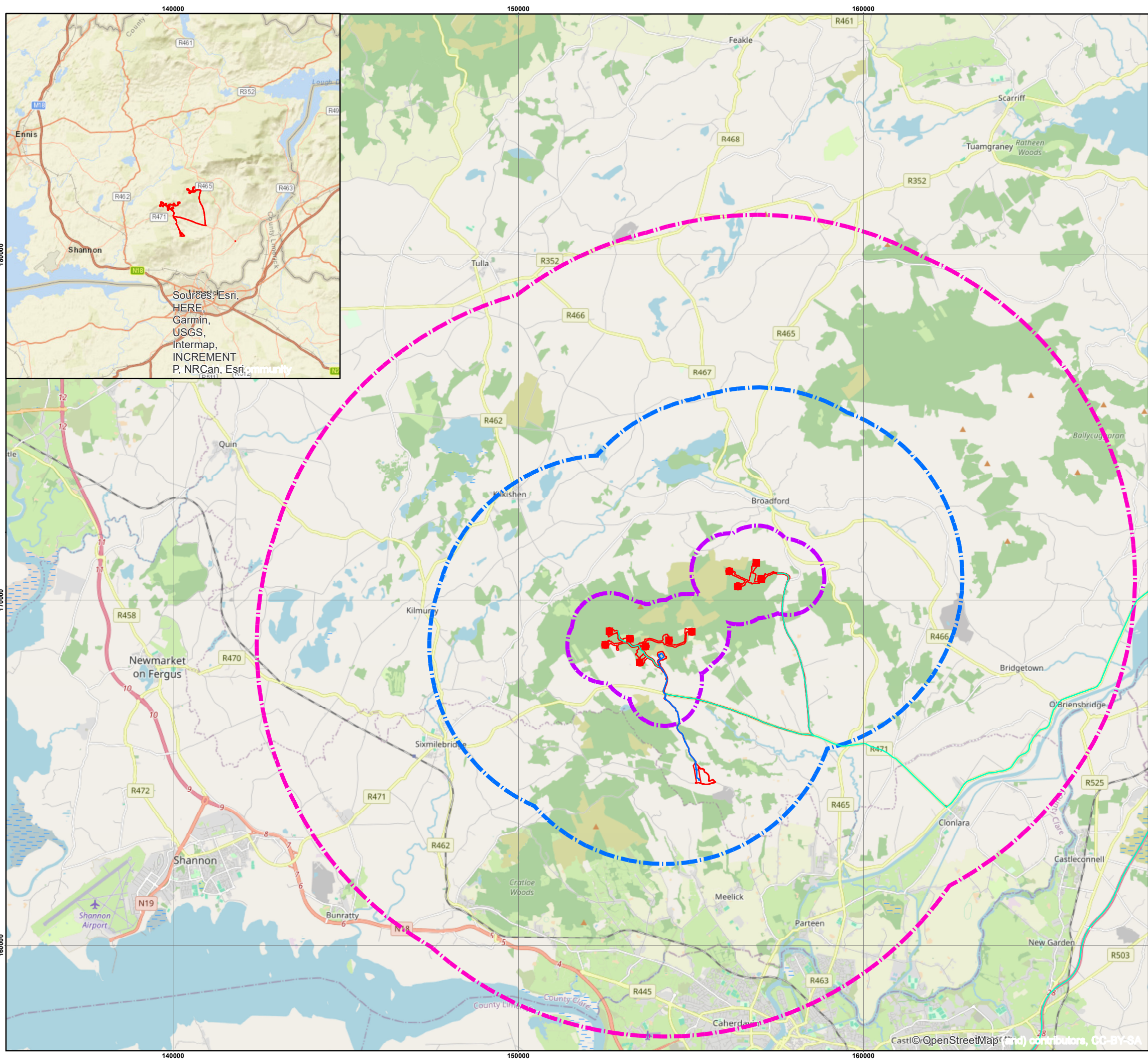


# Orsted Onshore Holdings Ireland Limited

Oatfield Wind Farm, Clare

**Figure 15.1: Location of the Proposed Development**

- Turbines
- Site Boundary
- GCR Loop In
- Turbine Delivery Route
- 1km Study Area
- 5km Study Area
- 10km Study Area



Drawn by: Greg Bowen Date: 13.12.2023  
 Checked by: Diarmuid O Seaneachain Date: 13.12.2023



This map is reproduced from Ordnance Survey material with the permission of Ordnance Survey © OpenStreetMap contributors licence CC BY-SA December 2023. For reference purposes only. No further copies may be made.

RSK ADAS Ltd,  
 11d Park House,  
 Milton Park,  
 Abingdon  
 OX14 4RS

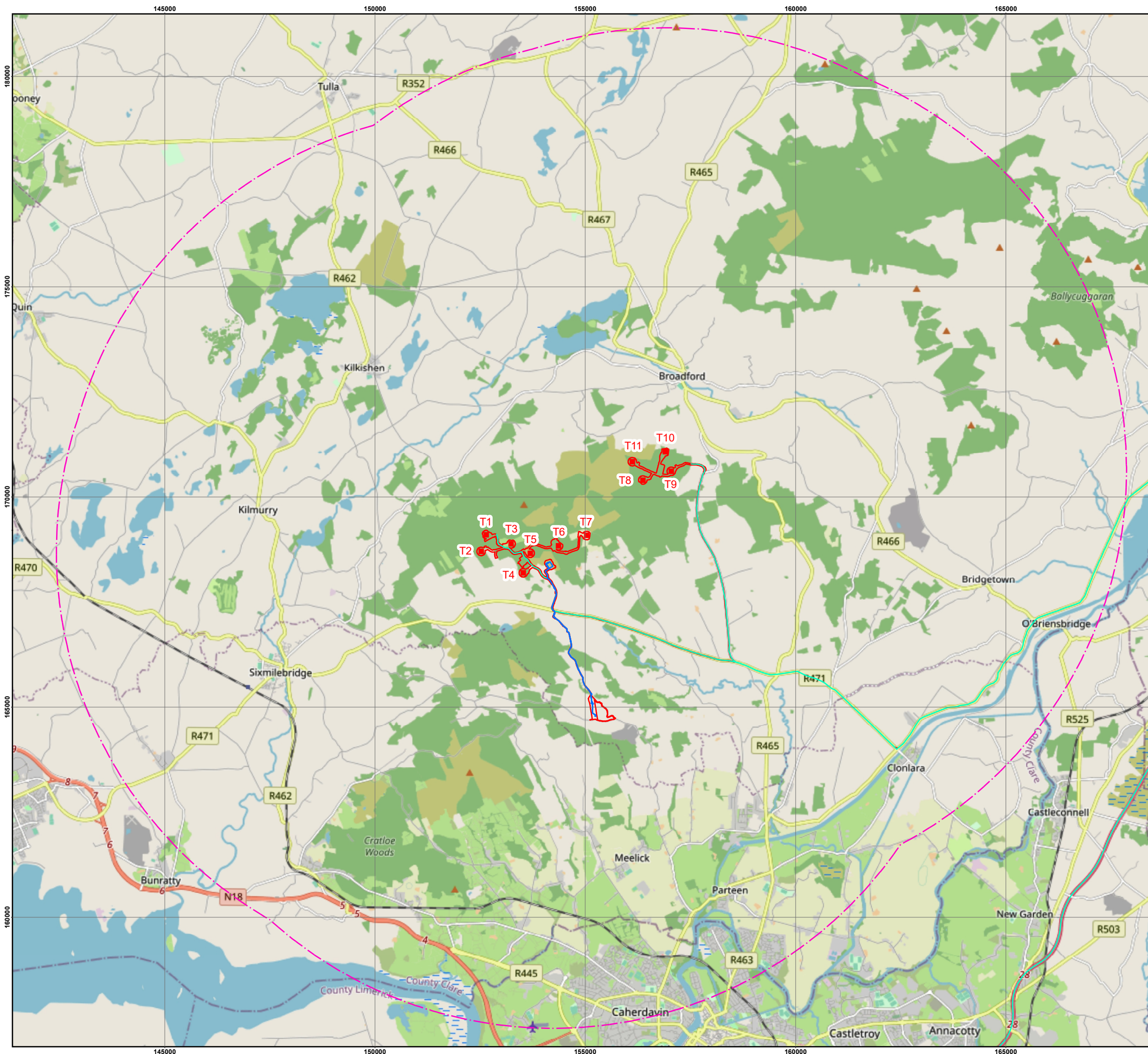


# Orsted Onshore Holdings Ireland Limited

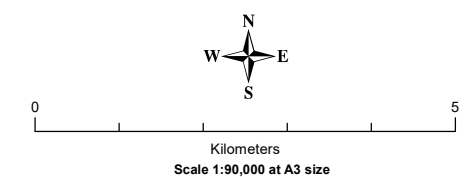
Oatfield Wind Farm, Clare

**Figure 15.2: National Monuments within the 10km Study Area**

- Turbines
- Site Boundary
- Grid Connection Route
- Turbine Delivery Route
- 10km Study Area
- National Monuments



Drawn by: Greg Bowen Date: 13.12.2023  
 Checked by: Diarmuid O Seaneachain Date: 13.12.2023

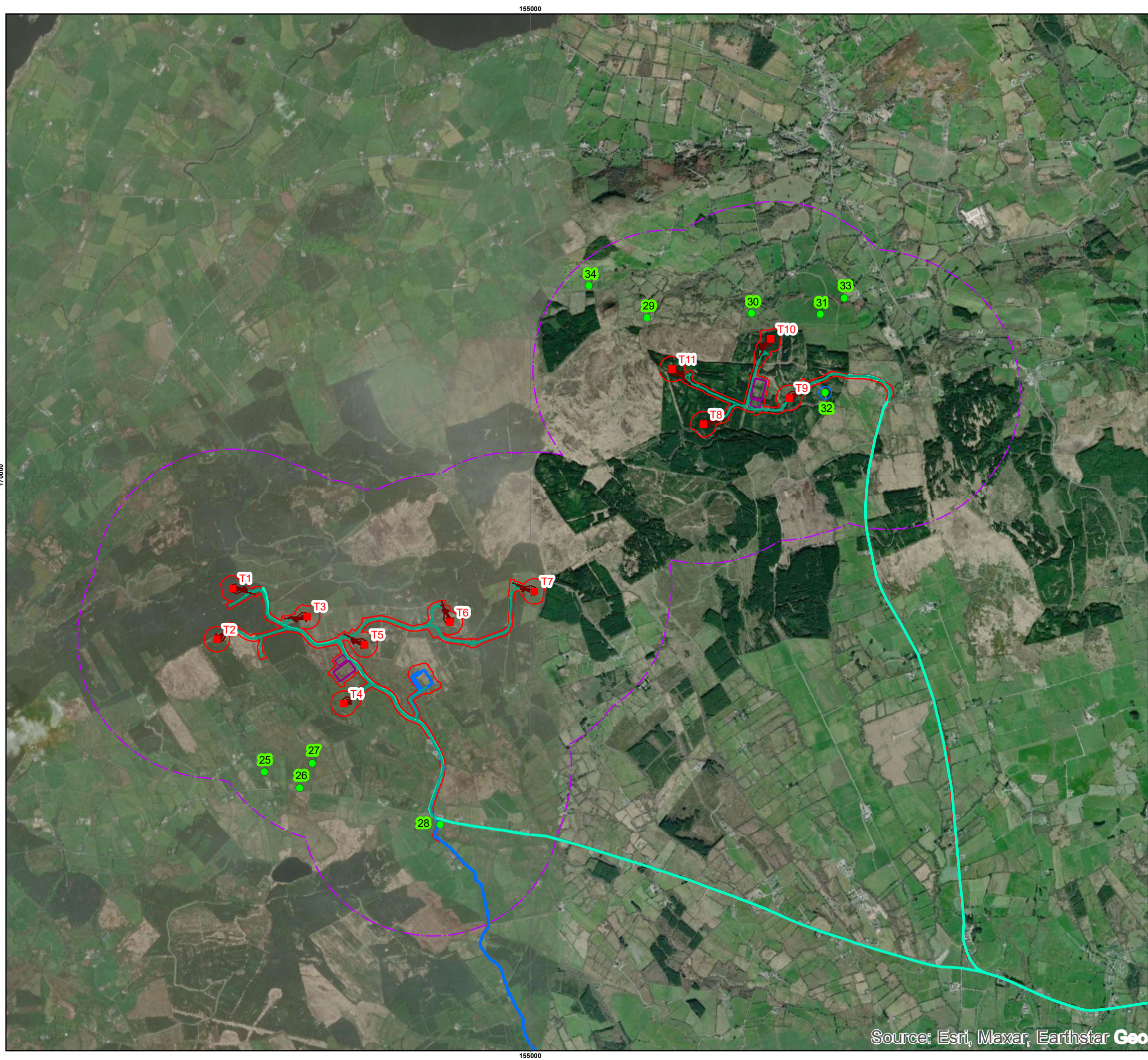


This map is reproduced from Ordnance Survey material with the permission of Ordnance Survey Ireland © OpenStreetMap contributors licence CC BY-SA December 2023. For reference purposes only. No further copies may be made.

RSK ADAS Ltd,  
 11d Park House,  
 Milton Park,  
 Abingdon  
 OX14 4RS







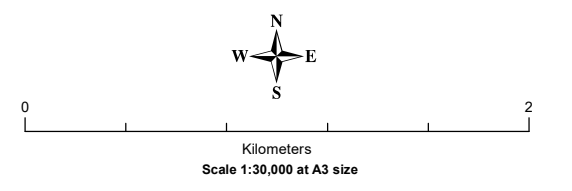
# Orsted Onshore Holdings Ireland Limited

Oatfield Wind Farm, Clare

**Figure 15.4: Recorded Heritage Assets within 1km of the Site**

- Turbines
- Turbine Hardstands
- CC Stockpile
- Access Tracks
- Site Boundary
- TDR
- GCR Loop In
- 1km Study Area
- SMR
- 50m Buffer

Drawn by: Greg Bowen Date: 13.12.2023  
 Checked by: Diarmuid O Seaneachain Date: 13.12.2023

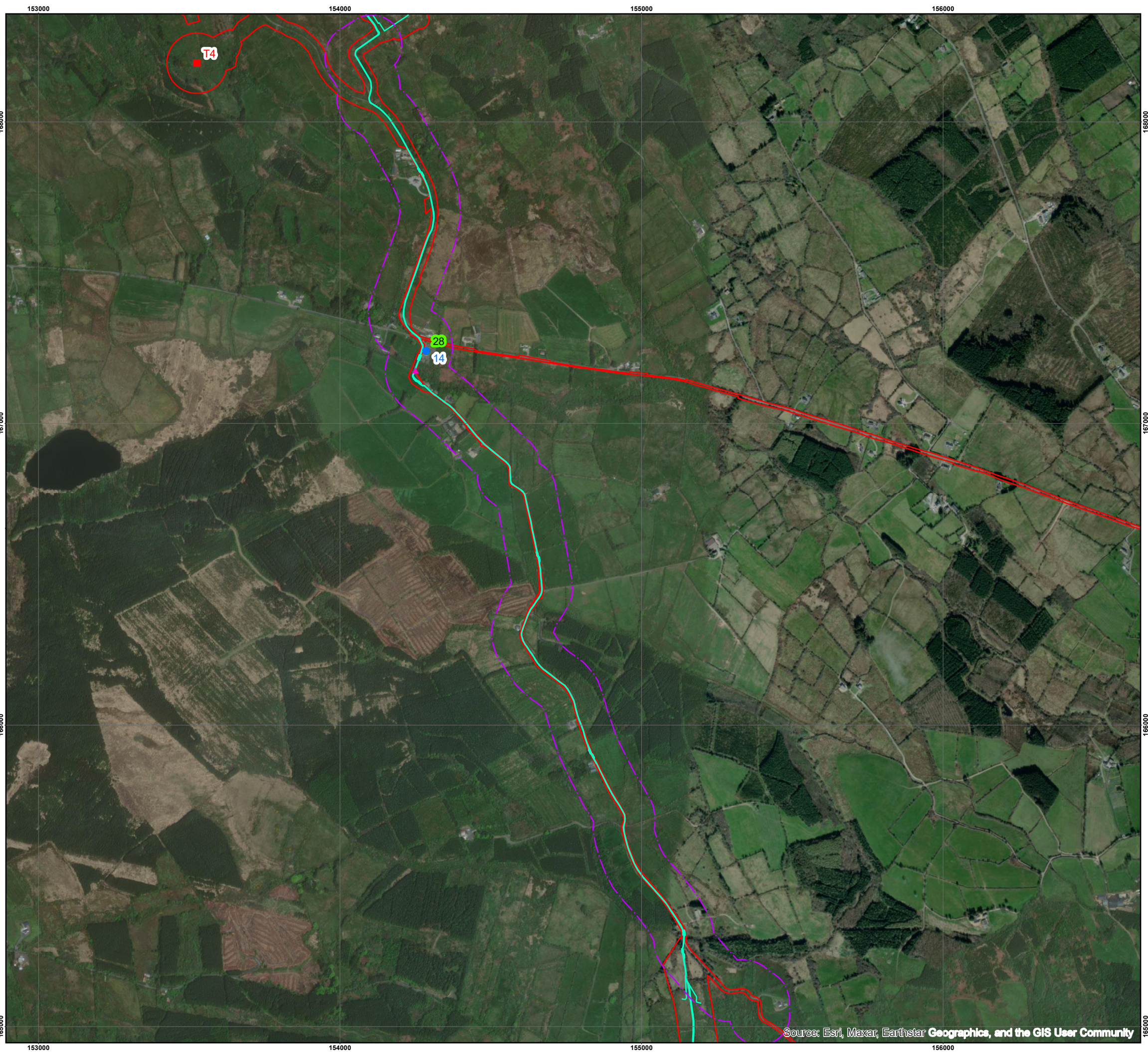


This map is reproduced from Google 2023 showing Oatfield Clare  
 © Google December 2023.  
 For reference purposes only. No further copies may be made.

RSK ADAS Ltd,  
 11d Park House,  
 Milton Park,  
 Abingdon  
 OX14 4RS



Source: Esri, Maxar, Earthstar Geo



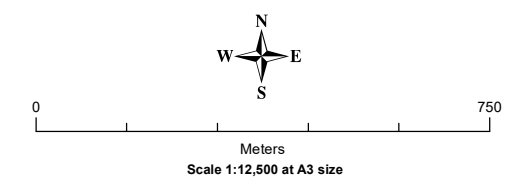
# Orsted Onshore Holdings Ireland Limited

Oatfield Wind Farm, Clare

**Figure 15.5: Recorded Heritage Assets within 100m of Grid Connection Loop In**

- Tubines
- Site Boundary
- GCR Loop In
- - - Study Area
- RPS
- SMR
- ▲ Historic Bridge

Drawn by: Greg Bowen Date: 13.12.2023  
 Checked by: Diarmuid O Seaneachain Date: 13.12.2023



This map is reproduced from Google 2023 showing Oatfield Clare © Google December 2023.  
 For reference purposes only. No further copies may be made.

RSK ADAS Ltd,  
 11d Park House,  
 Milton Park,  
 Abingdon  
 OX14 4RS



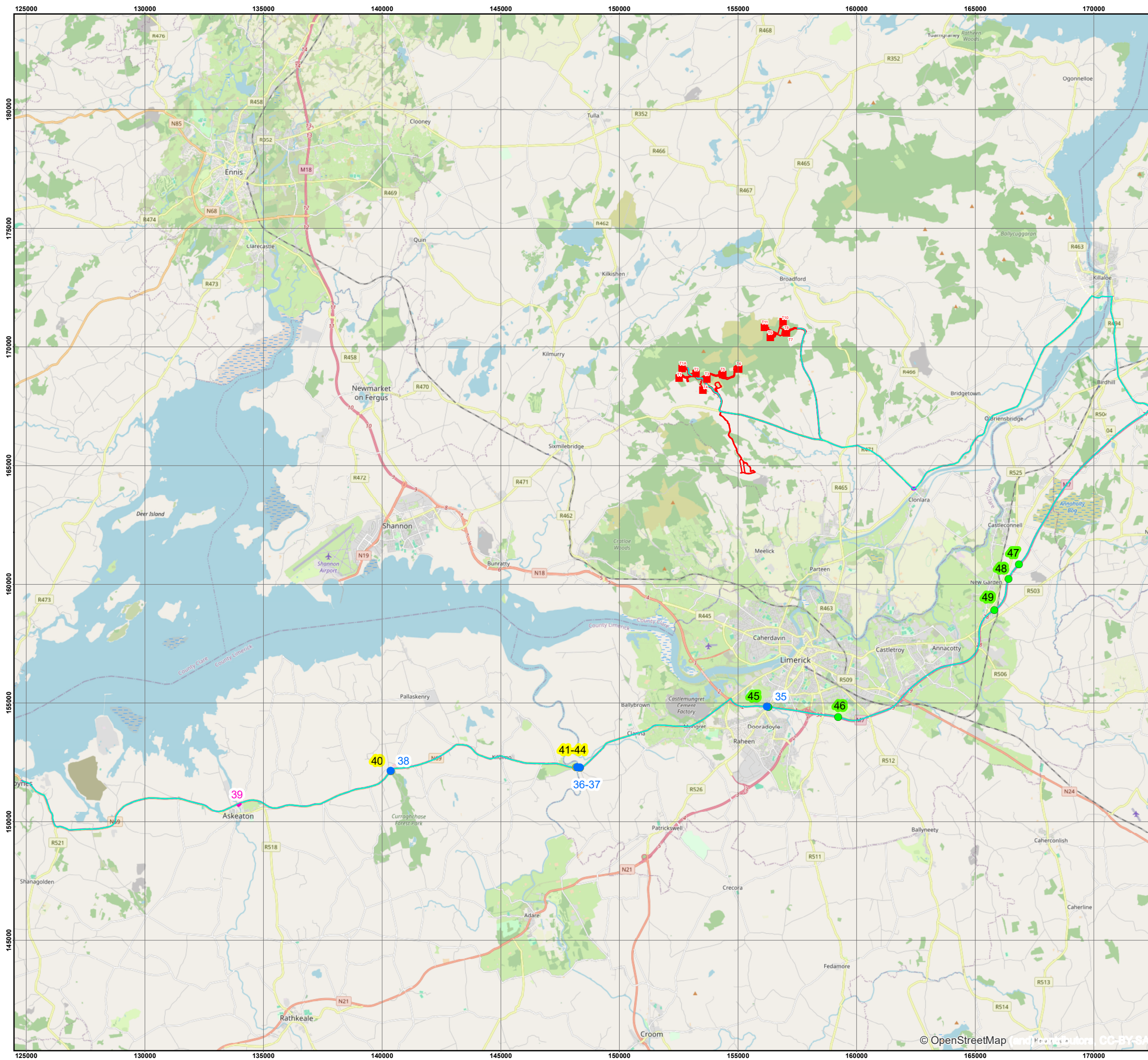
Source: Esri, Maxar, Earthstar Geographics, and the GIS User Community

# Orsted Onshore Holdings Ireland Limited

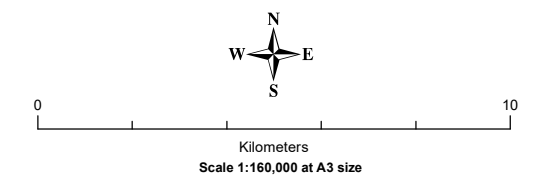
Oatfield Wind Farm, Clare

**Figure 15.6: Recorded Heritage Assets within the Turbine Delivery Route Study Area**

- Tubines
- Site Boundary
- Turbine Delivery Route
- Turbine Delivery Route Study Area
- RPS
- ACA
- NIAH
- SMR



Drawn by: Greg Bowen Date: 13.12.2023  
 Checked by: Diarmuid O Seaneachain Date: 13.12.2023

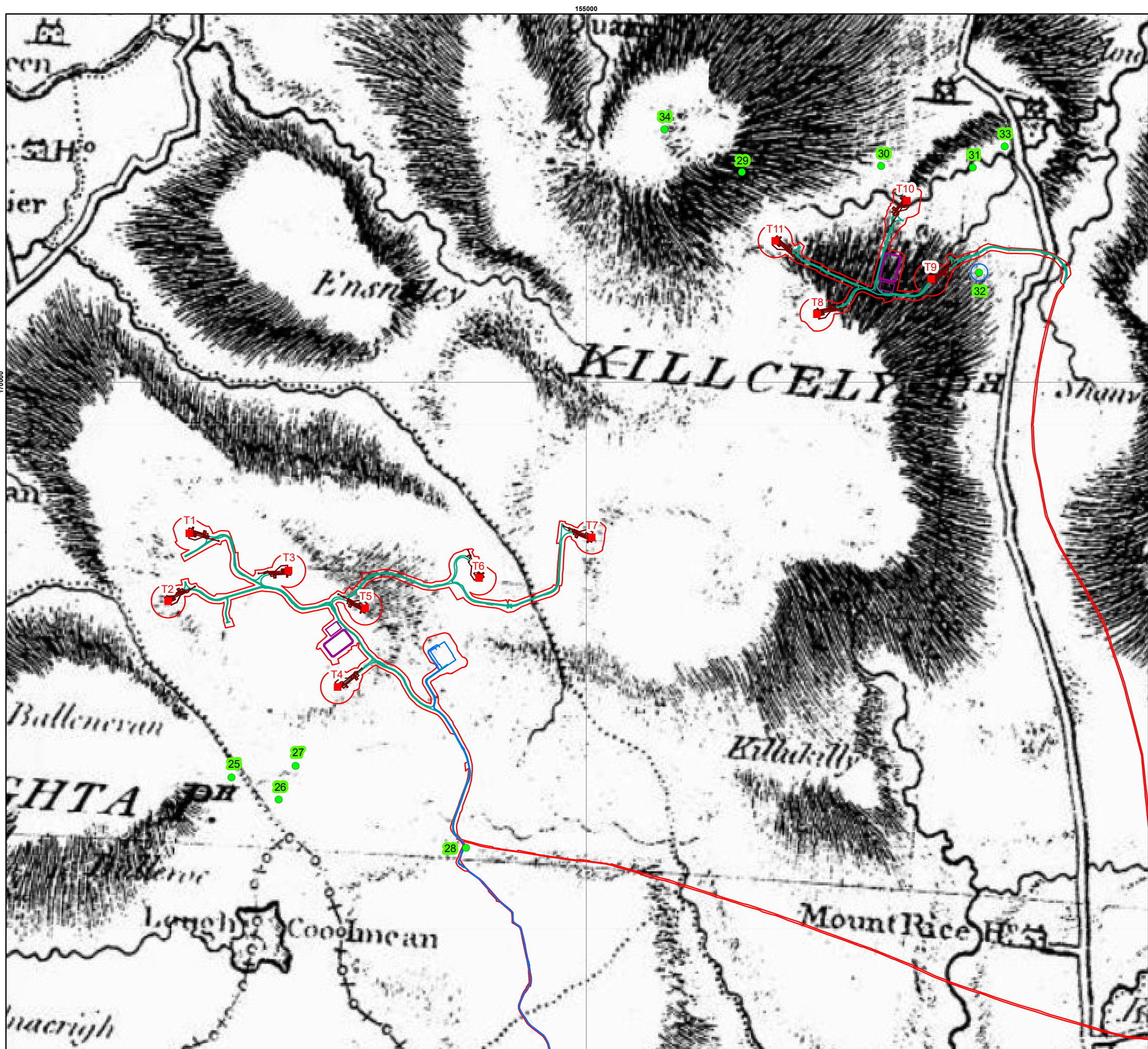


This map is reproduced from Google 2023 showing Oatfield Clare  
 © Google December 2023.  
 For reference purposes only. No further copies may be made.

RSK ADAS Ltd,  
 11d Park House,  
 Milton Park,  
 Abingdon  
 OX14 4RS



© OpenStreetMap and contributors, CC-BY-SA



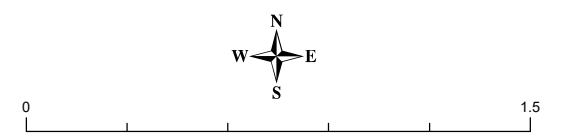
# Orsted Onshore Holdings Ireland Limited

Oatfield Wind Farm, Clare

**Figure 15.7: Site Location on the Pelham Map 1787**

- Turbines
- Turbine Hardstands
- CC Stockpile
- Access Tracks
- Site Boundary
- GCR
- SMR
- 50m Buffer

Drawn by: Greg Bowen Date: 13.12.2023  
 Checked by: Diarmuid O Seaneachain Date: 13.12.2023



This map is reproduced from Clare Library showing Oatfield Clare  
 © Clare Library December 2023.  
 For reference purposes only. No further copies may be made.

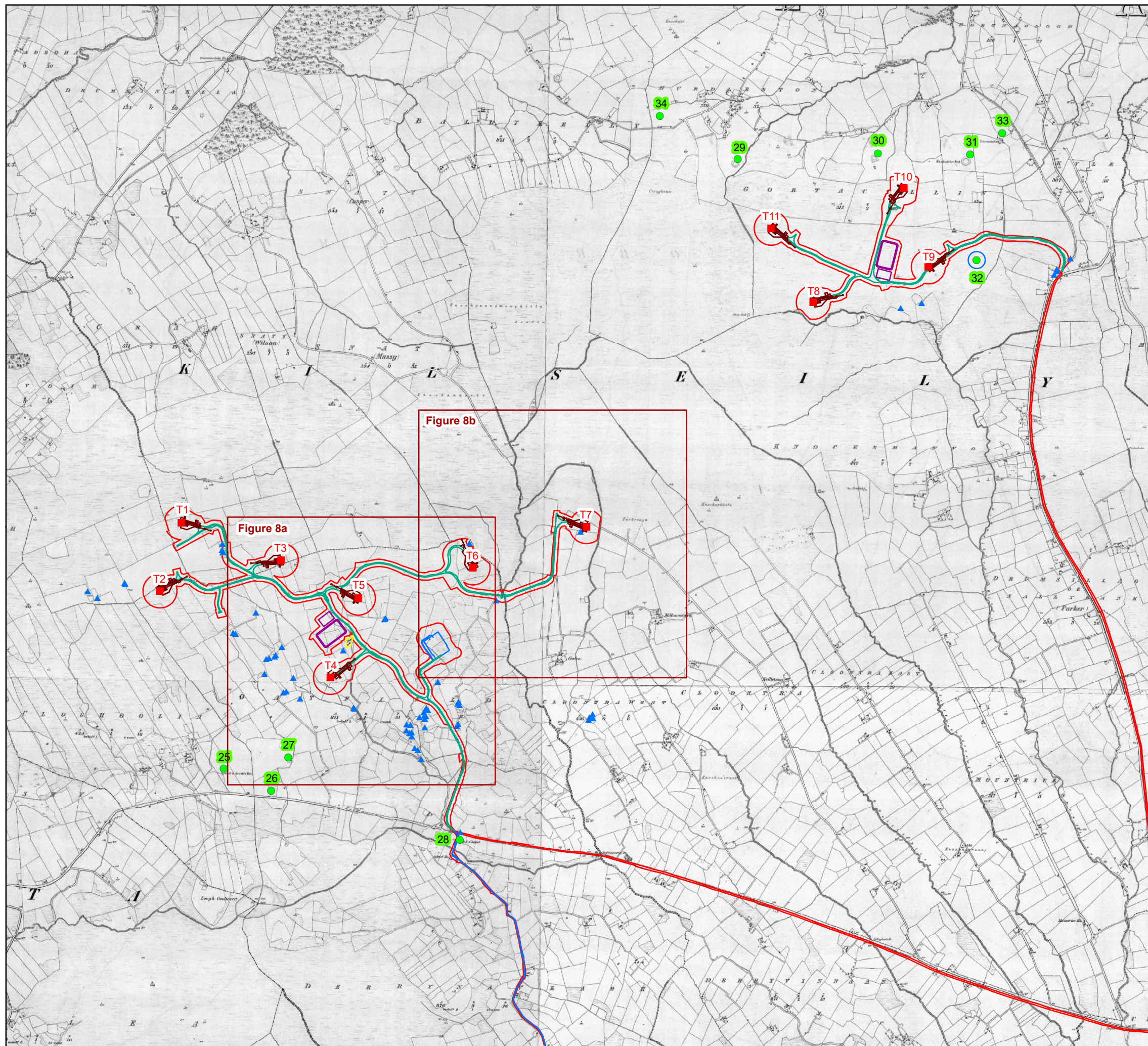
RSK ADAS Ltd,  
 11d Park House,  
 Milton Park,  
 Abingdon  
 OX14 4RS



# Orsted Onshore Holdings Ireland Limited

Oatfield Wind Farm, Clare

**Figure 15.8: Site Location on the OSi 1st Edition 6 Inch Map 1842**



- Turbines
- Turbine Hardstands
- CC Stockpile
- Access Tracks
- Site Boundary
- GCR
- SMR
- 50m Buffer
- ▲ 19th Century Structures
- 10m Buffer

Drawn by: Greg Bowen

Date: 13.12.2023

Checked by: Diarmuid O Seaneachain

Date: 13.12.2023



0 1  
Kilometers

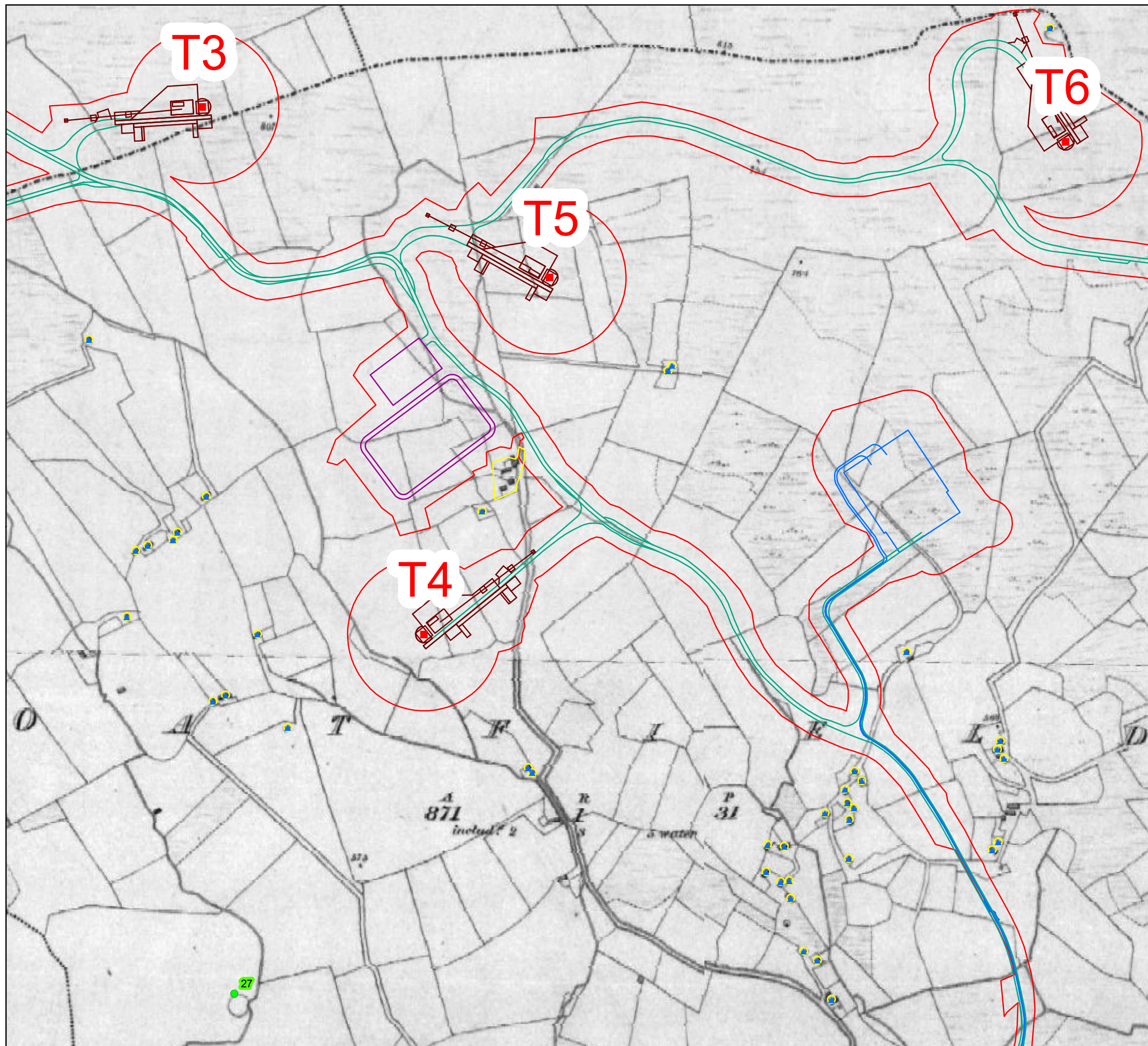
Approximate scale 1:22,500 at A3 size

This map includes Ordnance Survey Ireland data  
Any unauthorised reproduction infringes National Mapping Division  
of Tailte Eireann copyright. © National Mapping Division of  
Tailte Eireann, 2023 All rights reserved.

RSK ADAS Ltd,  
11d Park House,  
Milton Park,  
Abingdon  
OX14 4RS







# Orsted Onshore Holdings Ireland Limited

Oatfield Wind Farm, Clare

**Figure 15.8a: Turbines T3-T6 on the OSI 1st Edition 6 Inch Map 1842**

- Turbines
- Turbine Hardstands
- CC Stockpile
- Access Tracks
- Site Boundary
- GCR
- SMR
- 50m Buffer
- ▲ 19th Century Structures
- 10m Buffer

Drawn by: Greg Bowen

Date: 13.12.2023

Checked by: Diarmuid O Seaneachain

Date: 13.12.2023

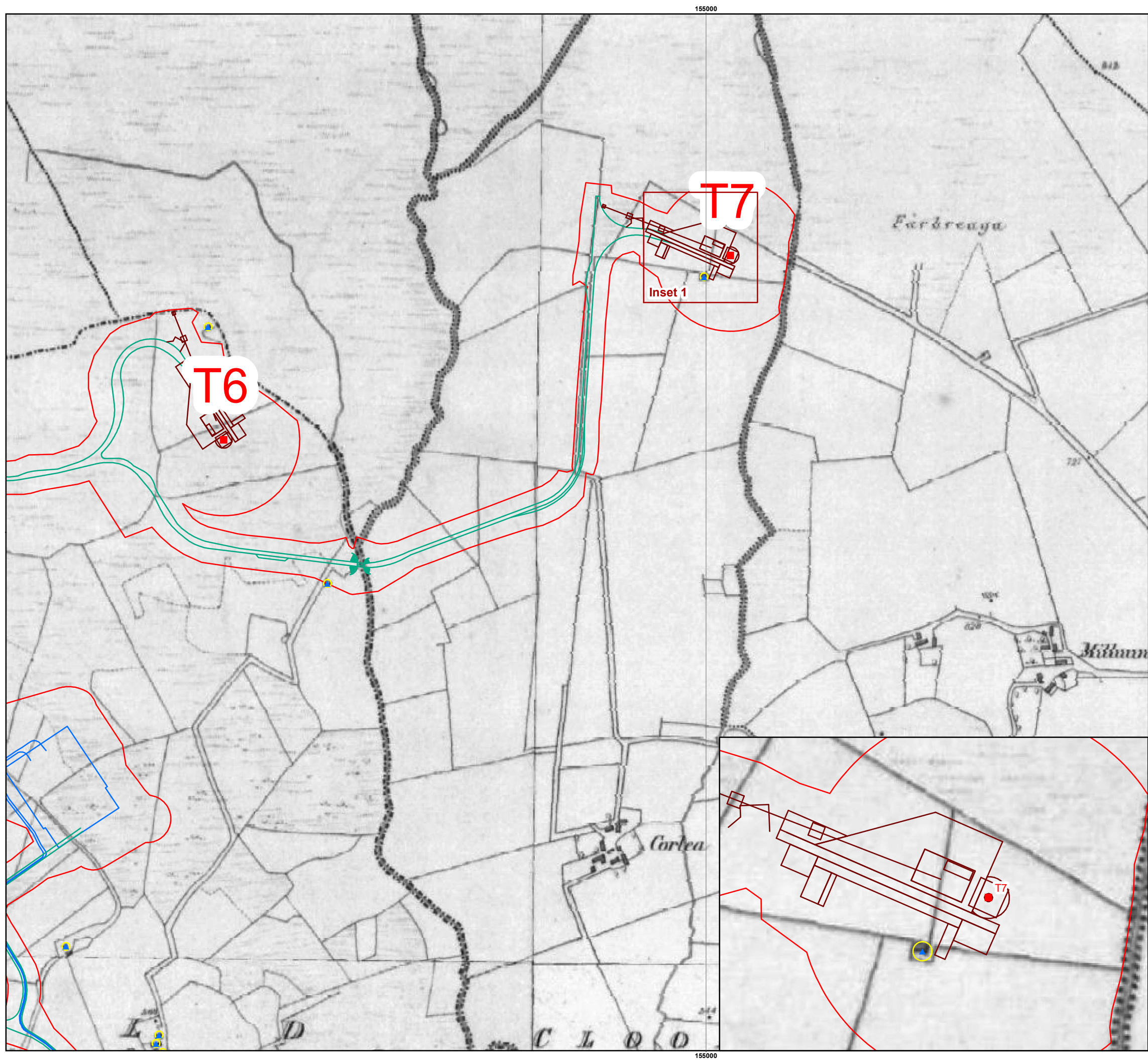


Approximate scale 1:5,000 at A3 size

This map includes Ordnance Survey Ireland data  
Any unauthorised reproduction infringes National Mapping Division  
of Tailte Eireann copyright. © National Mapping Division of  
Tailte Eireann, 2023 All rights reserved.

RSK ADAS Ltd,  
11d Park House,  
Milton Park,  
Abingdon  
OX14 4RS





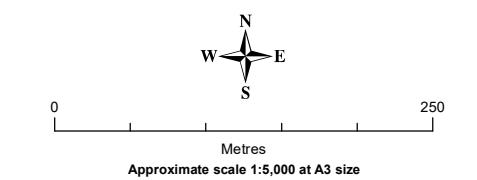
# Orsted Onshore Holdings Ireland Limited

## Oatfield Wind Farm, Clare

**Figure 15.8b: Turbines T6-T7 on the OSI 1st Edition 6 Inch Map 1842**

- Turbines
- Turbine Hardstands
- CC Stockpile
- Access Tracks
- Site Boundary
- GCR
- SMR
- 50m Buffer
- ▲ 19th Century Structures
- 10m Buffer

Drawn by: Greg Bowen Date: 13.12.2023  
 Checked by: Diarmuid O Seaneachain Date: 13.12.2023



This map includes Ordnance Survey Ireland data  
 Any unauthorised reproduction infringes National Mapping Division of Tailte Eireann copyright. © National Mapping Division of Tailte Eireann, 2023 All rights reserved.

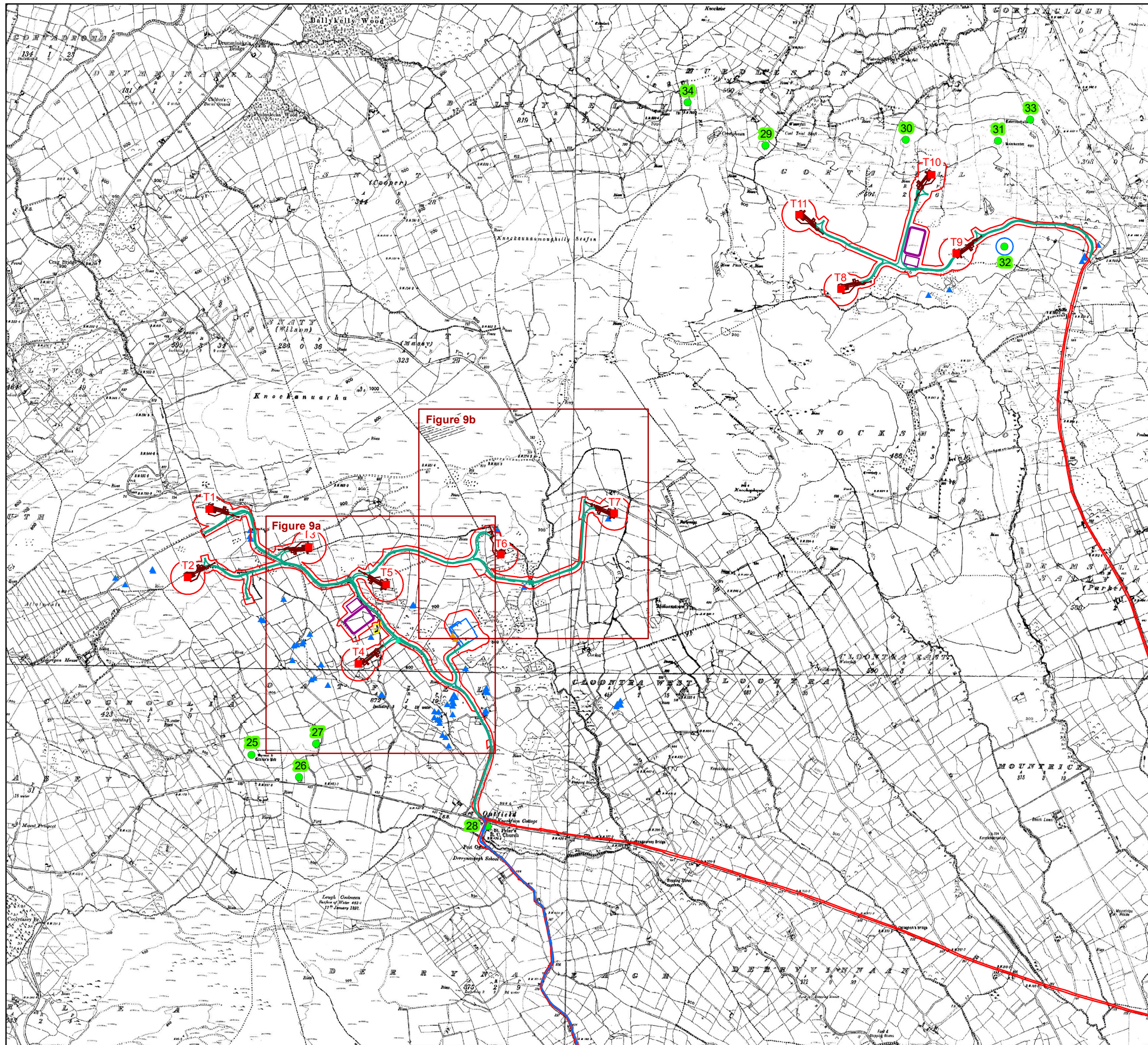
RSK ADAS Ltd,  
 11d Park House,  
 Milton Park,  
 Abingdon  
 OX14 4RS



# Orsted Onshore Holdings Ireland Limited

Oatfield Wind Farm, Clare

**Figure 15.9: Site Location on the OSi Last Edition 6 Inch Map 1897**



- Turbines
- Turbine Hardstands
- CC Stockpile
- Access Tracks
- Site Boundary
- GCR
- SMR
- 50m Buffer
- ▲ 19th Century Structures
- 10m Buffer
- ▲ Approx. Locations Modern Clearance Cairns
- ▲ Approx. Location Droveway

Drawn by: Greg Bowen

Date: 13.12.2023

Checked by: Diarmuid O Seaneachain

Date: 13.12.2023



Approximate scale 1:22,500 at A3 size

This map includes Ordnance Survey Ireland data  
Any unauthorised reproduction infringes National Mapping Division  
of Tailte Eireann copyright. © National Mapping Division of  
Tailte Eireann, 2023 All rights reserved.

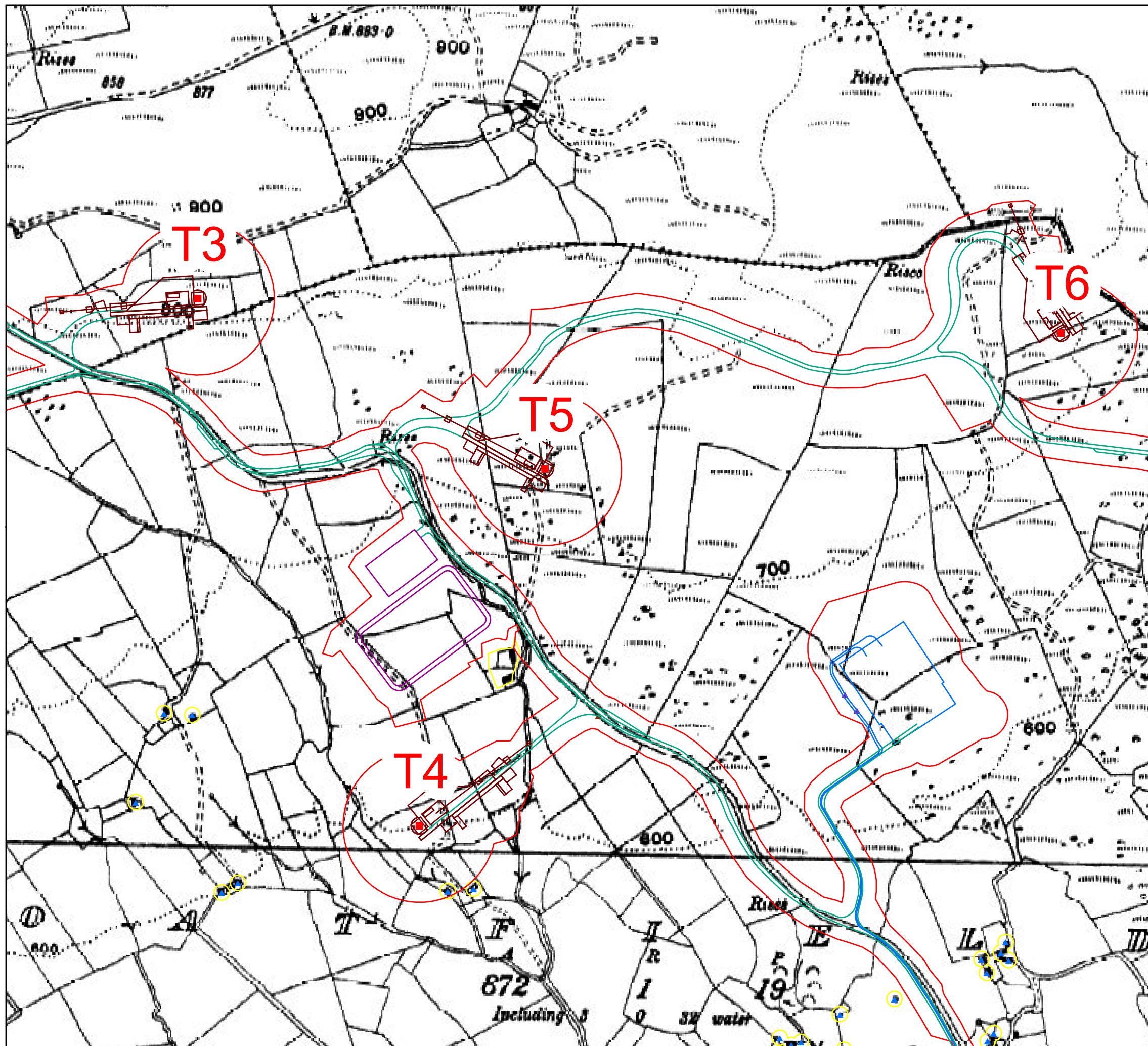
RSK ADAS Ltd,  
11d Park House,  
Milton Park,  
Abingdon  
OX14 4RS



# Orsted Onshore Holdings Ireland Limited

Oatfield Wind Farm, Clare

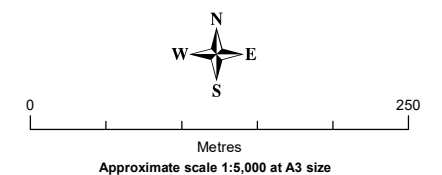
**Figure 15.9a: Turbines T3-T6 on the OSI Last Edition 6 Inch Map 1897**



- Turbines
- Turbine Hardstands
- CC Stockpile
- Access Tracks
- Site Boundary
- GCR
- SMR
- 50m Buffer
- ▲ Standing 19th Century Structures
- Late 10m Buffer
- ▲ Approx. Location Droveway
- ▲ Approx. Locations Modern Clearance Cairns

Drawn by: Greg Bowen Date: 13.12.2023

Checked by: Diarmuid O Seaneachain Date: 13.12.2023



This map includes Ordnance Survey Ireland data  
Any unauthorised reproduction infringes National Mapping Division  
of Tailte Eireann copyright. © National Mapping Division of  
Tailte Eireann, 2023 All rights reserved.

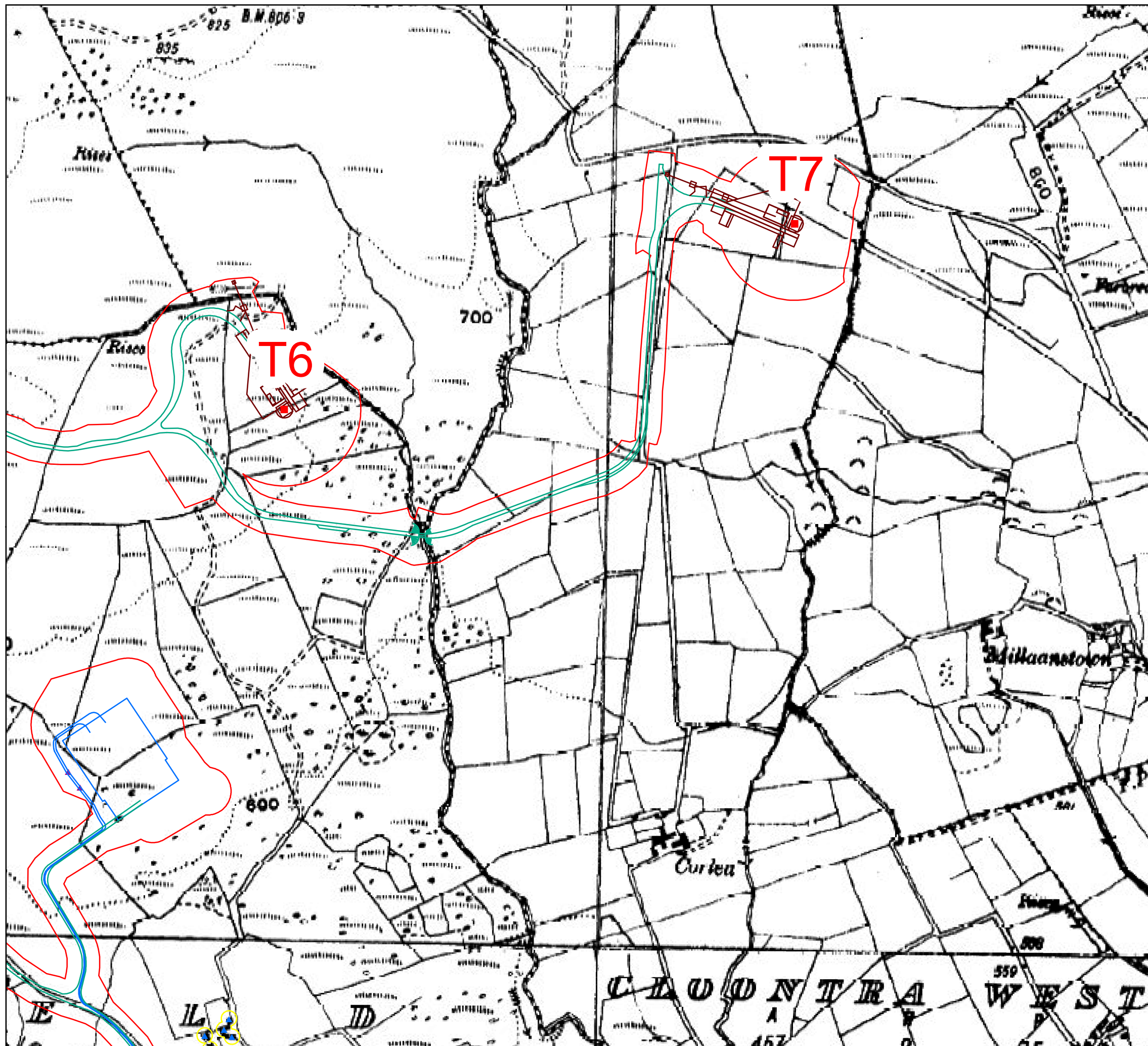
RSK ADAS Ltd,  
11d Park House,  
Milton Park,  
Abingdon  
OX14 4RS



# Orsted Onshore Holdings Ireland Limited

Oatfield Wind Farm, Clare

**Figure 15.9b: Turbines T6-T7 on the OSI Last Edition 6 Inch Map 1897**



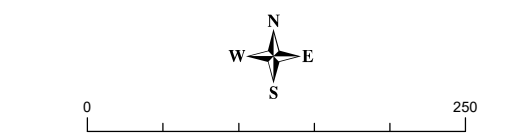
- Turbines
- Turbine Hardstands
- CC Stockpile
- Access Tracks
- Site Boundary
- GCR
- SMR
- 50m Buffer
- ▲ Standing 19th Century Structures
- Late 10m Buffer
- ▲ Approx. Locations Modern Clearance Cairns

Drawn by: Greg Bowen

Date: 13.12.2023

Checked by: Diarmuid O Seaneachain

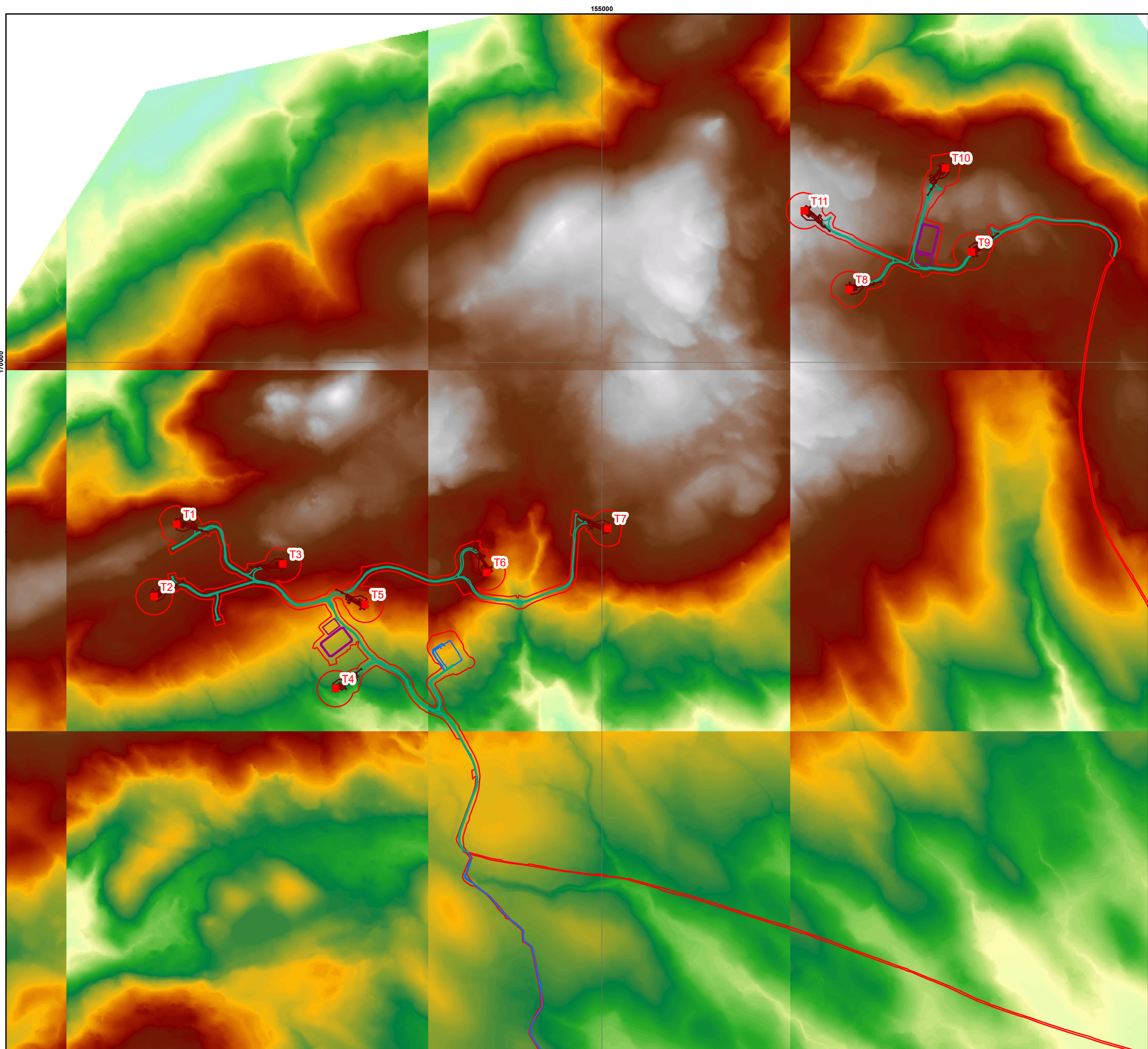
Date: 13.12.2023



This map includes Ordnance Survey Ireland data  
Any unauthorised reproduction infringes National Mapping Division  
of Tailte Eireann copyright. © National Mapping Division of  
Tailte Eireann, 2023 All rights reserved.

RSK ADAS Ltd,  
11d Park House,  
Milton Park,  
Abingdon  
OX14 4RS





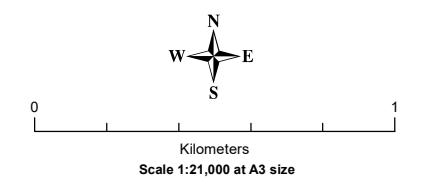
# Orsted Onshore Holdings Ireland Limited

Oatfield Wind Farm, Clare

**Figure 15.10: Site boundary on LiDAR basemap**

- Turbines
- Turbine Hardstands
- CC Stockpile
- Access Tracks
- Site Boundary
- GCR

Drawn by: Greg Bowen      Date: 13.12.2023  
 Checked by: Diarmuid O Seaneachain      Date: 13.12.2023

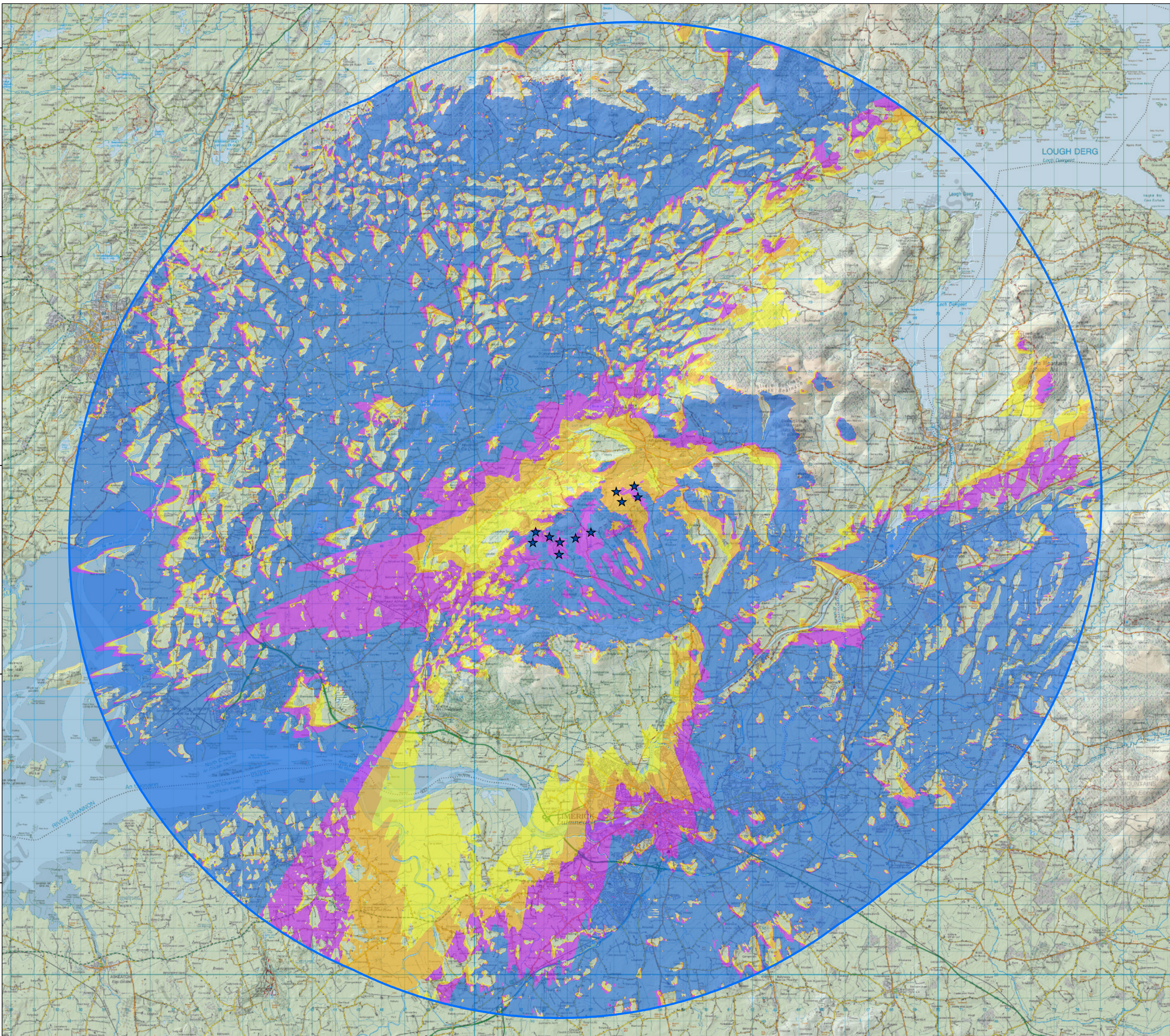


This map is reproduced from Nicholas O'Dwyer LiDAR material December 2023. For reference purposes only. No further copies may be made.

RSK ADAS Ltd,  
 11d Park House,  
 Milton Park,  
 Abingdon  
 OX14 4RS



**ZTV (Zone of Theoretical Visibility) indicating the areas that have a potential view of the proposed turbines at Oatfield Wind Farm (Tip Height 179.5m)**



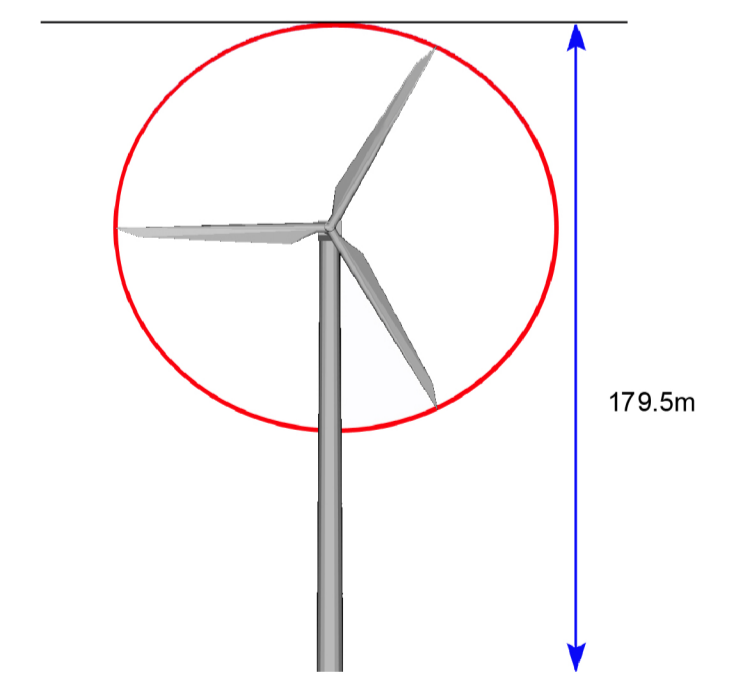
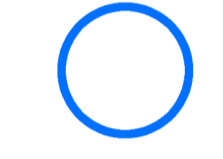
**Proposed Turbines**



**No. Turbines Visible**



**20km Extent**



This ZTV map is based on the potential to see any part of the proposed turbine/s from the tip to base in a theoretical bare-ground scenario i.e. without accounting for screening by vegetation and/or buildings.

Observer Height assumed: 1.7m to eye-level height  
Tip Height: 179.5m

Scale: 1:80,000 if printed @ A1 size

